

Memory Care

at Edgewood Sioux Falls



Memory Care - Designed for Balance

Edgewood's Memory Care residents live as independently as possible within a smaller, more comfortable home-like environment specifically designed to enhance sense of security and belonging. Alzheimer's disease, dementia and memory loss affect each individual differently. Our staff members have ongoing training to understand the conditions and challenges associated with this disease. Our staff-to-resident ratio allows us to provide more personal attention and help residents maintain daily living skills.

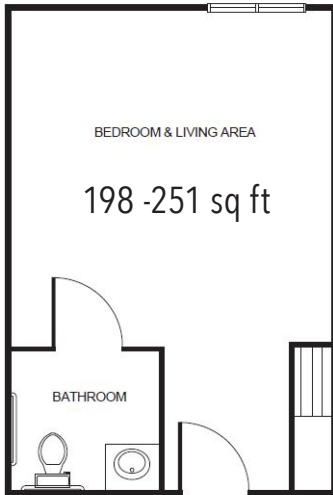
As people lose the ability to learn new things, Edgewood's staff members reaffirm what residents do remember, to improve self-esteem and reinforce positive experiences. Residents may assist in activities such as meal preparation, cleanup, folding laundry and other tasks. Edgewood Memory Care residents receive:

- 24-hour staffing with access to RN
- Resident safety checks every 30 minutes
- Safe, secure environment with secured doors & outdoor courtyard
- Care from staff members with specific training in Alzheimer's disease & memory care
- Three nutritious, home-cooked meals & snacks daily
- Individualized and small group activities
- Assistance with bathing, grooming & dressing
- Medication administration under nurse supervision
- Laundry & housekeeping services
- Life Stations designed to spark past memories
- Barbershop / beauty salon available for additional charge

Service Level

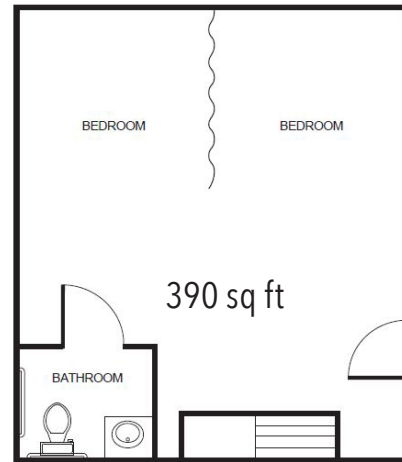
To simplify pricing structures Edgewood offers three levels of care based on each resident's current abilities and stage in their memory loss. This ensures our residents receive the appropriate level of care and support, whether that's through verbal cueing or hands-on care and assistance. The type of service level package is determined with a Registered Nurse (or designee as determined per state regulations) who completes a total resident evaluation.

Apartment rates



Studio starting at

<i>Package One</i>	\$5,175
<i>Package Two</i>	\$5,575
<i>Package Three</i>	\$5,975



Companion starting at

<i>Package One</i>	\$4,175
<i>Package Two</i>	\$4,575
<i>Package Three</i>	\$4,975

Additional rates

Community Service Fee (non-refundable)	\$1,000
Assisted Plus	\$300
Comfort Care Plus	\$550
Short Term Stay	\$175 per night
Adult Day Services.....	\$15 per hour