

# Assisted Living

at Edgewood Mitchell



## The comforts of home, balanced with care

Edgewood's Assisted Living is a unique combination of housing, health care and comfortable amenities. Our approach offers a continuum of care with services customized for each individual's needs. Services and amenities include:

- On-site 24-hour staffing
- Scheduled consultation with our nursing services
- 24-hour access to a RN
- Assistance monitoring blood pressure, blood sugar, weight, pulse & temperature
- Emergency pendant system
- Medication management & administration
- Assistance with dressing, bathing, grooming & with other daily activities
- Daily life enrichment activities and regular outings
- Housekeeping, laundry & linen services
- Three delicious meals daily
- Barbershop / beauty salon services available at additional cost

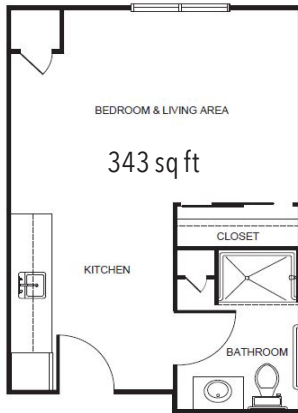
## Service Packages

To simplify pricing structures, we offer three service level packages. A variety of services are grouped based on number and type of services needed and/or acuity. The type of service level package is determined with a RN (or designee as determined per state regulations) who completes a total resident evaluation.

Level 1.....	\$425
Level 2.....	\$725
Level 3.....	\$1,350

## Apartment rates

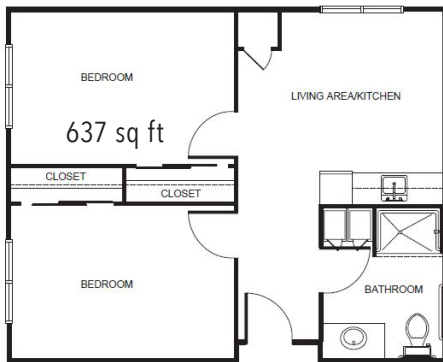
---



Studio starting at.....\$2,975



One Bedroom starting at.....\$3,475



Two Bedroom starting at.....\$3,875

## Additional rates

---

Community Service Fee (non-refundable) .....	\$750
Assisted Plus .....	\$300
Comfort Care Plus .....	\$550
Second Person .....	\$525
Short Term Stay .....	\$150 per night