

Assisted Living

at Edgewood Spring Creek
Fruitland



The comforts of home, balanced with care

Edgewood's Assisted Living is a unique combination of housing, health care and comfortable amenities. Our approach offers a continuum of care with services customized for each individual's needs. Services and amenities include:

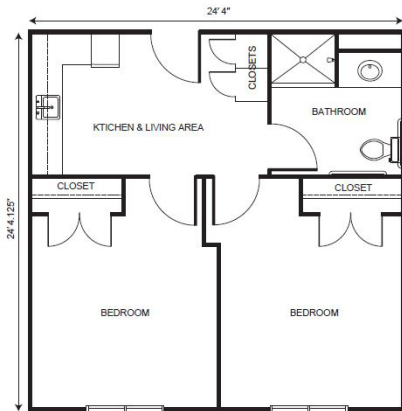
- On-site 24-hour staffing
- Scheduled consultation with our nursing services
- Coordination of transportation to appointments
- Assistance monitoring blood pressure, blood sugar, weight, pulse & temperature
- Three delicious meals per day plus snacks
- Housekeeping, laundry & linen services
- All basic utilities (basic cable included)
- Emergency pendant system
- Medication assistance
- Assistance with dressing, bathing, grooming & with other daily activities
- Daily life enrichment activities and regular outings
- Private bathrooms with grab bars & walk in showers

Service Packages

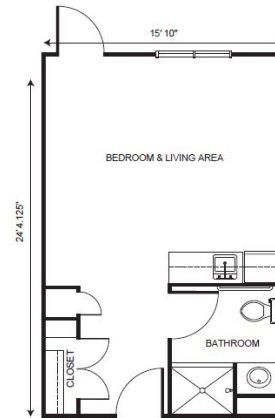
To simplify pricing structures, we offer three service level packages. A variety of services are grouped based on number and type of services needed and/or acuity. The type of service level package is determined with a RN (or designee as determined per state regulations) who completes a total resident evaluation.

Level 1.....	\$550
Level 2.....	\$950
Level 3.....	\$1,750

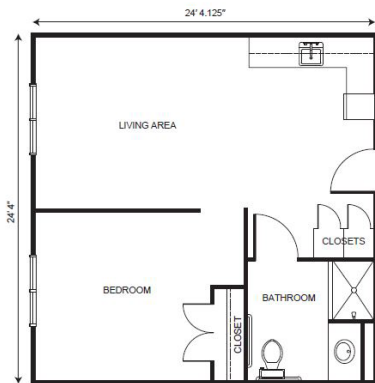
Apartment rates



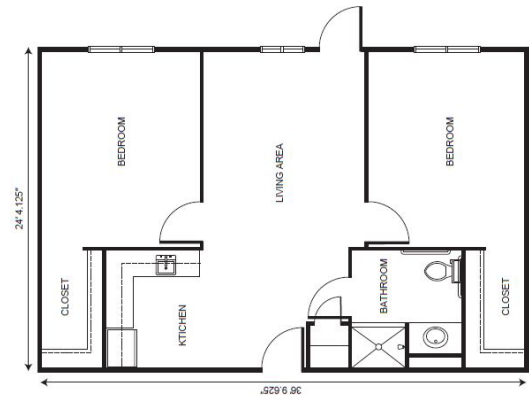
Companion Living *starting at*.....\$2,850



Deluxe Studio *starting at*.....\$3,650



One Bedroom *starting at*.....\$4,575



Two Bedroom *starting at*.....\$5,075

Additional rates

Community Service Fee (non-refundable)	\$1,200
Assisted Plus	\$300
Comfort Care Plus	\$300
Second Person Fee	\$1,000
Short Term Stay	<i>starting at</i> \$150/night