

Assisted Living

at Edgewood Mandan



The comforts of home, balanced with care

Edgewood's Assisted Living is a unique combination of housing, health care and comfortable amenities. Our approach offers a continuum of care with services customized for each individual's needs. Services and amenities include:

- On site 24 hour staffing including 24 hour access to a registered nurse
- Scheduled consultation with our nursing services
- Assistance monitoring blood pressure, blood sugar, weight, pulse & temperature
- Three delicious meals per day plus snacks
- Housekeeping, laundry & linen services
- All basic utilities including wifi and satellite TV
- Emergency pendant system
- Medication management & administration
- Assistance dressing, bathing, grooming & with other daily activities
- Daily life enrichment activities & regular outings
- Scheduled transportation to medical appointments
- Movie theater, game room, exercise room, activity room, and a library with computer
- Chapel with worship services
- Private bathrooms with grab bars & walk in showers

Edgewood Plus

The Edgewood Plus program provides the above amenities along with additional supervision, assistance, and a higher staff to resident ratio. The transition to Edgewood Plus is necessary if a resident requires or has:

- 1 person transfers (more often than not)
- Individualized restroom schedule
- Complex care needs (frequent nursing supervision)
- Complex pain management
- Hospice
- Frequent falls

Service Packages

To simplify pricing structures, we offer three service level packages. A variety of services are grouped based on number and type of services needed and/or acuity. The type of service level package is determined with a RN (or designee as determined per state regulations) who completes a total resident evaluation.

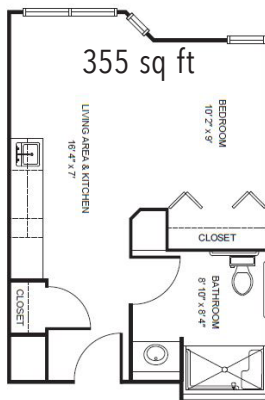
Assisted Living

Level 1.....	\$550
Level 2.....	\$950
Level 3.....	\$1,575

Edgewood Plus

Level 1.....	\$1,995
Level 2.....	\$2,495
Level 3.....	\$2,995

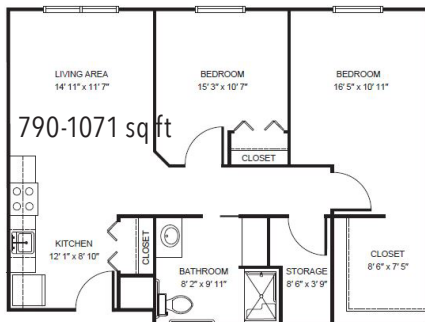
Apartment rates



Studio starting at.....\$3,200



One Bedroom starting at.....\$3,475



Two Bedroom starting at.....\$4,075

Additional rates

Community Service Fee (non-refundable)

Studio	\$600
One Bedroom	\$800
Two Bedroom	\$1,000
Assisted Plus	\$300
Comfort Care Plus	\$300
Short Term Stay	\$175/night
Second Person	starting at \$500